

## Flower Follies Festival, Slimbridge



*Blue delphiniums and white carnations representing a fountain of water.*



*Yellow chrysanthemums arranged in a spiral, echoed by some of Peter's survey tape, represent earth energies which often send our rods a-twirling.*

We were delighted to be invited to take part in the Flower Follies Festival at the Parish Church, Slimbridge, over the May Bank Holiday weekend. It was special because historically the church had tried to stamp out dowsing and healing skills during the middle ages, and even today, some churchgoers are a little wary. Conversely, some of our members are regular churchgoers themselves! So it was great to be welcomed and to add our display to many others.

Our Membership Secretary, Barbara Davis, and her daughter, did us proud.

In addition to the lovely displays pictured above, there were also photo boards to show what else we get up to, and a small poster proclaiming "Slimbridge Dowsing Group usually meets in the Slimbridge Village Hall on the second Thursday of the month at 1.45 pm and the fourth Saturday of the month at 10.15 am, when all aspects of dowsing – Water Divining, Health, Archaeology, and Earth Energies – are covered. Divining with rods or pendulums as well as remote dowsing are included. All levels of ability from beginner to experienced are welcome."

### Slimbridge Dowsing Group Committee

<b>Chairman</b>	Peter Golding	01453 890316	mailto@petergolding.net
<b>Vice Chairman</b>	Peter Gibson	01453 890820	peterbgibson@tiscali.co.uk
<b>Treasurer</b>	Barry Goldring	01453 861002	barryandmichele@waitrose.com
<b>Secretary/Membership</b>	Barbara Davis	01453 890679	barbara@davis679.fsnet.co.uk
<b>Publicity/Newsletter</b>	Trish Mills	01453 545855	quicksilver7@btinternet.com
<b>Refreshments</b>	Ann Jones	01453 890244	Rc.jones@homecall.co.uk
<b>Training Co-ordinator</b>	Jon Martin	01453 547204	jon.martin@tiscali.co.uk
<b>Preparation of Hall</b>	Jim Greatrix	01453 543444	

Slimbridge Dowsing Group on the internet: [www.petergolding.net](http://www.petergolding.net)



**SLIMBRIDGE  
DOWSING  
GROUP  
Gloucestershire**

## Newsletter

**Slimbridge Dowsing Group**

*Affiliated with the British Society of Dowsers*

**Issue 7**

**July 2010**

### New Look?

No, it's not a New Look Newsletter this month, but it is a new banner, and this is the only way I could fit it in!

Peter Golding had it made locally by Simon Bingham of Sema4 Graphics, Berkeley Heath, GL13 9EU, telephone 01453 811 353 in case you ever need one.

And thank you to Peter, we look forward to seeing it proudly displayed.

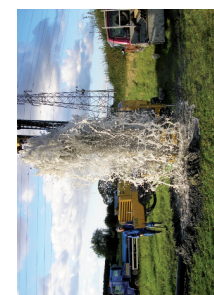
### Needles, haystacks and shoe horns!

It can be quite interesting gathering all the material together for this Newsletter and making it fit. After I'd just about shoe horned it all in, I received a late request from **Michael Haxeltine** regarding his talk, **The Measure of Dowsing, on Thursday 8th July**. He asks that you bring along any of the following that you might have: plans for a house – say two different options; Council reports for comparison; a 'which' report; a garden to be redesigned; or a planning application that you are challenging.

### Apologies

Apologies for the quality of some of the photographs supplied by forthcoming speakers, I can only use what I am given!

*Enjoy learning to dowsing for water, archaeology, health & healing, and earth energies.*



**Dowsing throughout Gloucestershire**

**01453 890316**

[www.petergolding.net](http://www.petergolding.net)



## Slimbridge Dowsing Group Programme July to September 2010

Saturday 3rd July

### Water Divining Course Peter Golding

One of Peter's independent full-day water divining courses, usually well supported by BSD members since Peter's fees are very reasonable. Lunch at the local pub. Phone Peter direct on 01453 890316.



### Thursday 8th July The Measure of Dowsing Michael Haxeltine\*

Michael is a member of Surrey Dowzers and has been endeavouring to apply or develop the concept of using dowsing for analysis for business, government, town planning and hospitals. Measuring dowsing energy using either the Bovis Units Scale or a Gigahertz template, Michael's method takes human beings and their needs into account as well as all the usual cost factors.

A hands-on talk with examples to try yourself.

Photo shows Michael (on right) explaining dowsing to the Colonel and Padre at Surrey Army Cadet force's 2007 Annual Camp.

Thursday 17th July

### Sound Healing Jan van der Elsen

Using sound to re-balance the internal vibrations in our bodies and energy fields, Jan will use Tibetan Singing Bowls, Crystal Singing Bowls, Tuning Forks, Peruvian Whistling Vessels and our own voices. A hands-on session where you can experience the physical and emotional changes sound can give; it will be bliss!

**Note:** As well as a Sound Healing practitioner, Jan is a certified Reiki Master and Life Coach, with his own recording studio and more than 20 years experience. With his wife Agnes, a qualified Swedish Masseuse, Aromatherapist, Reiki practitioner, Crystal Healing and Crystal Sonic Rejuvenation practitioner, Jan will soon be opening Lightship Therapies, a one-stop-shop for complementary health care, as soon as refurbishment is complete and they are safely moored near Gloucester Docks.



Visit [www.lightshiptherapies.net](http://www.lightshiptherapies.net) to see progress on the lightship refurb.



### Saturday 31st July Slimbridge Horse Show

All members welcome

We are now regulars at Slimbridge Horse Show. It's a fun day out and all members are welcome to come along and take a turn manning the stand. A chance to dowsing people's pets too.

Photo shows Peter Golding dowsing a visitor's picture of her cat whose leg had been amputated!

Unless otherwise stated, Meetings take place in Slimbridge Village Hall on Saturdays at 10.15 for 10.30 am and Thursdays at 1.45 for 2.00 pm.

Thursday 12th August

### Animal Healing Ann Lodygowski\*

Ann offers professional animal healing throughout the world, particularly to some of the most expensive race horses around. From a pony to a parrot, Ann helps us find out through dowsing what they are feeling, both mentally and physically. She can dowse hair from a mane, a photo of your cat or a feather from a bird, to discover their aches and pains, thoughts and feelings, and to establish how to help them, which may be chiropractic, herbal, flower remedies, or homeopathic. Animals can tell you what they need but it's easier with Ann! Tel 01548 581240 or [ann.annimel@gmail.com](mailto:ann.annimel@gmail.com) if you want a consultation.

Saturday 28th August

### Ley Hunting Peter Gibson

Ley Hunters is a name given by author Alfred Watkins to those who look for features in the landscape that appear to be in straight lines and can also be detected with dowsing rods on the ground. Dowsing for Leys, or the old track ways, can lead to many features on the ground and can indicate sacred places in the past. Peter is extremely knowledgeable in both history and ley lines, so you are likely to learn a lot.



Thursday 9th September

### Earth Energies, Geopathic Stress and Agriculture

Dr Patrick MacManaway\*

Dr Patrick MacManaway will present and discuss findings from fifteen years in the field with homes, work places and small and large farms. People, animals and plants respond to the subtle energies around us. What are the opportunities available with a dowser's knowledge and skill to balance our environment towards an 'interactive agriculture' philosophy?

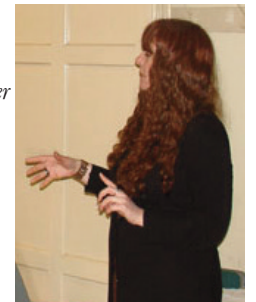
**Note:** Dr Patrick MacManaway is a third-generation healing practitioner with a degree in medicine from the University of Edinburgh, and training in European mystical and psychic practices, western geomancy, feng shui, and a range of holistic therapies. He is the author of several books and a past President of the BSD.



Saturday 25th September

### Avebury Stone Circle Maria Wheatley\*

We are meeting Maria at 11.00am at the Henge Bookshop in Avebury. Under her guidance we will visit the stones to investigate earth energies emanating from them, and then a break for lunch – either bring your own, eat at the pub or at the National Trust cafe. In the afternoon everyone is free to do their own thing - dowsing the stones for themselves. The charge is £5 per head payable to Maria on the day. There is parking at the National Trust Car Park – fee payable by non NT members. Arrangements to car share nearer the time. Phone Barbara Davis 01453 890679



\* Visiting speaker