

Thursday 8th December
**Christmas Lunch at a
 haunted local Inn** with Steve
 Sanderson – and music!

The Christmas Four Tables this year has taken on a new look thanks to Steve Sanderson. He thought it would be nice to hold it in Ye Old Dursley Hotel, with some singing and some dowsing too, but not as we know it.

Exact details are to be confirmed but we'll meet at about 12.30 upstairs in the big hall where we can get a drink and have a chat, with live music from new SDG members Alex and Scotty, also known as Dark Island. They joined SDG this year and have kindly offered to entertain us.

We'll eat about 1.30 and afterwards those of us that would like to do so can dows the hotel for a variety of things, including ghosts.

When Steve booked the room in July, the owner told him an absolutely fascinating story of a haunting in the pub. Steve has been told where this event took place, and invites us to see if we can find it. It's not compulsory if you prefer to just come along and socialise.

There's plenty of parking at the back of the hotel with no time limit. The hotel owners are incredibly friendly and said we can dows the whole place to our hearts' content.

Please email Steve (address below) for more details and to book your place on 8th December 2016. All welcome!



Alex & Scotty, aka Dark Island, will be singing carols, folk songs, blues, their own original songs and a few covers, on guitar, saxophone and flute. Visit www.darkislandmusic.net for more info.

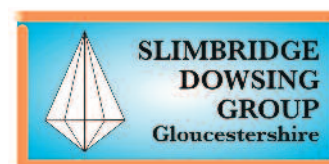
Directions: Drive through Dursley with Sainsbury's on your left. At small roundabout turn left down Long Street. See Hotel on left; 20 yards after that turn left up narrow alleyway (just after R.P. Jones empty shop) to Car park. You can access pub from the rear – we'll put up a sign.



Slimbridge Dowsing Group Committee

President	Peter Golding	01453 890316	mailto@petergolding.net
Chairman	Trish Mills	07513 437114	quicksilver7@icloud.com
Vice-Chairman & keys	Steve Sanderson	01453 890220	sanderson702@btinternet.com
Secretary & Membership	Barbara Davis	01453 890679	barbara@davis679.fsnet.co.uk
Treasurer	Barbara Davis	01453 890679	barbara@davis679.fsnet.co.uk
Publicity/Newsletter	Trish Mills	01453 545855	quicksilver7@icloud.com
Refreshments	Ann Jones	01453 890244	ann.croft327@btinternet.com
Field Events Co-ordinator	Barry Goldring	01453 861002	barryandmichele@waitrose.com
Committee Member	Elaine Clements	01453 548454	elaine@castlefs.com

Slimbridge Dowsing Group on the internet: www.slimbridgedowsers.org.uk



Newsletter

Slimbridge Dowsing Group

Affiliated with the British Society of Dowsers

Issue 31 & 32

September to December 2016

Issue 31 and 32?

The observant amongst you will have noticed this Newsletter is numbered 31 and 32. We've had three 8-page Newsletters this year, covering four months each, but for 2017 I intend to revert to four 4-page Newsletters, covering three months each. And if I don't adjust the numbering now, we will for ever be out of kilter.

Next Year . . .

That said, the January to March 2017 issue of the Newsletter will have 8 pages because we'll include the free pull-out-and-keep centre-fold of the speakers, meetings and field trips in 2017. We have some great talks booked already.

Theme running through it

This Newsletter seems to have a Dowsing theme running through it, which is unusual for us! This simply evolved. When I book speakers, I just let them know the dates available, and they choose what suits them. Like buses, all the dowsing talks seem to have come along at once. Our chance to learn a lot.

Your AGM Needs You!

Yes, it's that time again. I am delighted to announce that every member of the present Committee has agreed to stand for re-election at the AGM. This doesn't mean you can leave it all to us though!

Nominations

We welcome further nominations – any member can nominate any other member, subject to their agreement. If you feel you or someone you know can help, or do a better job (!) now is your chance to say so.

2016 seems to have been the year of the Leadership coup – I live in hope!

Nominations please to Barbara Davis, Secretary. Contact details on back page.

Health & Wellbeing Section

Anne Matthias has agreed to lead us in the next two H&W meetings, after the Thursday speakers in September and October. Obviously there won't be H&W Meetings after the AGM in November, or the Christmas lunch (see back page for details) in December. With a view to 2017, Anne and Rob Gerrish will review the situation after the October Meeting, and will consult with regulars then too.

Training Options

Dowsing coaching is available before or after all our meetings. Or come along to our field trips and have fun learning on the job. All welcome.

Rabbits for Christmas

There are still a few copies left of *This Rabbit is Constipated!* and *It's Around Here Somewhere!* They make great Christmas presents. Normally £8, £6 to members.

Trish Mills

Slimbridge Dowsing Group Programme September to December 2016

Thursday 8th September

Sacred Geometry with Karen French*

Without geometry there would be no time, no space, no possibility of your existence. Your thoughts, actions and creativity rely on geometry. Learn about the meaning and purpose of five essential yet simple geometric shapes that are fundamental to the construction of reality and a universal model called the CE Gateway to the Heavens. Hear why they have been used down the centuries as potent symbols and tools across all cultures, particularly when used with sacred intent. No complex mathematics is included and we will be doing a few very simple exercises to really appreciate the dynamics of the shapes.



Health & Wellbeing Meeting with Anne Matthias

Just two H&W meetings left for this year, September and October



Saturday 24th September **Dowsing Workshop – Hartmann & Curry Lines** with Steve Dawson*

Steve was a commercial diver and rig worker for the Oil companies, has worked all over the world for 40+ years and was very fortunate to come across dowsing when working in the desert searching for buried oil-lines. Intrigued by the Pyramids, ancient churches and faiths, Steve came across their unique relationship with the worldwide Hartmann & Curry Grid Lines.

Throughout the ages human beings, birds, bees and many other species have used these earth grids to commute and to commune. Until the Reformation (1500s) nearly all the Sacred sites, stone circles, groves, temples, churches, holy places and some not so holy places in the UK and Europe used these sacred orientations to commune, and many still do to this day. The H&C Lines are excellent for navigation; True North to 1/10 of a degree can be flagged-out in less than 20 minutes, but for us they are mainly fantastic 'Search-Tools'. In this talk and practical workshop Steve will steadily reveal how the grids can be accurately located and used to find potential buried treasure and ancient sacred sites.

Pub lunch and chat at the Tudor Arms after every Saturday meeting.

Thursday 13th October

Dowsing Cardiff with Grace Edgar, Cardiff Dowsters*

From March to August 2015, the Cardiff Dowsters Group undertook the dowsing of the whole of Cardiff. Initially begun as map dowsing on a large-scale map, we then dowsed particularly important areas on more detailed maps before finally going on-site, dowsing and experiencing the energy lines themselves.

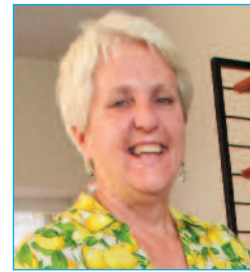
We have made a lot of important discoveries which we described in an article in Dowsing Today magazine published in April 2016. The project ended (?) with healing sessions of the black lines we discovered in Cardiff.



Health & Well Meeting with Anne Matthias
Final H&W Meeting for this year

* visiting speaker

Meetings take place in Slimbridge Village Hall on the second Thursday 1.45 for 2.30 pm and fourth Saturday 10am for 11am



Saturday 22nd October – **Dowsing for Water & Services** with Linda Prenter*, Water Diviner

Linda has been a dowser for some years, and has been fortunate to learn from George Applegate and Peter Golding. Today she tells us how she goes about dowsing on-site: her dowsing background; the dowsing process; gaining dowsing experience; background information and research; trusting your dowsing; building confidence through experience – getting out there and having a go! Also new areas to dowse – 'Pushing my boundaries.'

Pub lunch and chat at the Tudor Arms after every Saturday meeting.

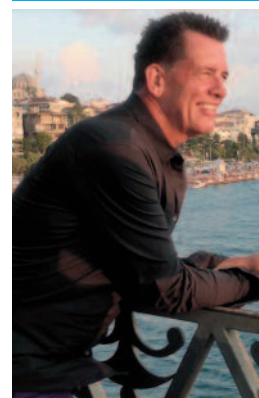
Thursday 10th November **AGM** – followed by our annual update of **Exploits of the Archaeological Section** – Barry Goldring & Peter Gibson

After the AGM, Barry and Peter will be updating us on the progress of our Archaeological Dowsing Section. Did we finish the Harts Barn dowsing? Did Barry manage to move Rob's labyrinth? Did we confirm Keith's map-dowsed Roman Fort? How many of Rob's Roman buildings did we find and what were they? Be prepared for great revelations! Those of a nervous disposition are advised to fortify themselves with a strong cup of tea before entering the auditorium.



Barry & Peter at Hurlers Stone Circle

NO Health & Wellbeing Meeting after the AGM (or after Christmas lunch)



Saturday 26th November – **The Hidden Hive of History** with Andrew Gough*

Andrew Gough is a researcher, writer, Editor of The Heretic Magazine, TV presenter (Channel 5, History, Discovery, National Geo, Yesterday) and enthusiast of ancient lands, mysteries and traditions. He will examine the lost tradition of what he believes to be the most deified god or goddess ever, the honeybee – forgotten god of the ancients, and graphically chronicle a sacred tradition he believes has existed for over 100 million years. In the process, he will reveal new insight into enigmas such as Atlantis, Sumerian reliefs, biblical patriarchs, the Labyrinth of Knossos, the Sphinx, goddess worship, the grail, the birth of religion, politics, illuminati, and much more. His websites are www.andrewgough.com and www.thehereticmagazine.com

Pub lunch and chat at the Tudor Arms after every Saturday meeting.



Please see overleaf for details of our Christmas Lunch event – Book Now! 8th December 2016