

Newsletter

Slimbridge Dowsing Group

Founded by Peter Golding

Affiliated with the British Society of Dowsers

Issue 40

October-December 2018

Chairman's Report.

Dowsing is certainly a fascinating topic with many different facets. I have now had the opportunity to explore a new one thanks to Barry and the Archaeological Interest Group he passionately leads. There I was, driving into the unknown to a field in Arlingham to meet Barry and other like-minded individuals with the intent to explore. We all met up for a brief chat and it's then when Barry's knowledge and passion come to the fore - along with his clipboard! For the rest of the day, dowsing opened a new door for me as we walked about discovering..... well I will leave that to Barry to explain in his talk at the AGM.

But the point is we have knowledge skills and experience within the group that we are tapping into, but I feel only in part.

This was also evident with our talk by Jon Martin on his task of building his amazing house with a little help from Dowsing. Another member of the group utilising his skills in Dowsing and calling on others in the group to help.

So here we have examples of what skills and knowledge we have in the group, but as I talk to more and more members, it's clear we have a vast depth hidden within. So, we need to continue to champion this and look at how we can bring this to the fore, along with more communication between ourselves.

To help facilitate this we are going to change the way our talks happen. Going forward we will all have an opportunity to learn and share the practicalities of Dowsing before the talk. This will be included in the email notifications to you all from Andrew and as you hopefully have already seen, we are going to restart the post talk lunches following input from you. All elements of "having that conversation" I keep talking about.

And lastly, we all need a point to start the conversation in the first place. So I would like to propose that we look at creating an induction pack for every existing member and then for every new member as they arrive. This could take a multiple of forms from cards and work sheets but would encompass the all important contact points, articles on how to dowse, protection, BSD Code of Conduct, our charter etc. Any volunteers to help progress this thought?

All elements of “having that conversation” I keep talking about.

Paul Syrett

Group Programme October - December 2018

2019 Programme Update

As you can see from the enclosed programme we have a slight change at the end of October. Mark Herbert has asked to postpone his field trip to his home at Callarde, in North Devon until next year, so we will now run a local field trip looking at local Sacred Sites and Earth Energies.

The 2019 programme is coming together and we have several confirmed speakers already and several people pulling together ideas for talks and field trips. We have speakers from Bristol and Cheltenham Dowsers coming to give talks on Earth Energies and Belas Knapp Long Barrow and we have an opportunity to explore Tortworth Arboretum being pulled together.

However, you are still able to bring ideas and thoughts forwards or even propose your own talk and enhance the conversation we are having between us. We want next year's programme to be a vibrant one and to add extra talks, field trips, explorations and conversations outside our Saturday programme. So please get in touch with Paul with your ideas.

Thursday 11th October - Sacred Land and Earth Energies with Paul Syrett

Why is a Burial Chamber where it is? Was it just for burying their dead? How can you find undocumented Burial Chambers, Henges and other ancient sites in the landscape? What are the relationships between Sacred Land and Earth Energies? How do other elements in the landscape indicate the presence of Earth Energies?

These are questions I hope to answer for you by using local examples in our landscape and outlining their relationships. We will review what is already known about energy lines, Leys, grids, etc. and expand this knowledge to show you an appreciation of what our ancestors knew well before us and how they looked at the land and their environment.



21st/22nd October - Callarde Dowsing Weekend with Mark Herbert.

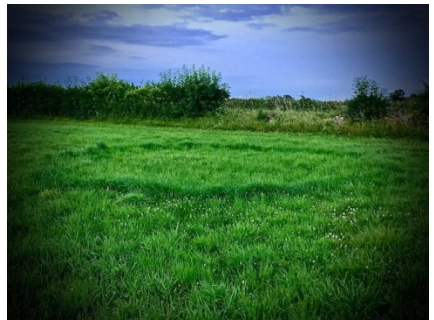
Unfortunately, this event has been cancelled. It was advertised on the BSD website. We will keep you informed if it is rescheduled.

Saturday 27th of October - Field Trip to Explore Sacred Land and Earth Energies with Paul Syrett and Elaine Clements.

Would you like to see our landscape in a different way? Then please come with us to explore the Sacred Land in the area, the relationship with Long and Round Barrows, those already identified and newly discovered along with how the Earth Energies are still shaping the environment today.

We will visit a number of locations from Uley to Randwick (if time permits) to “feel”, “see” and dowsing these sites. We will meet in Coaley Peak Car Park, Nr Nympsfield at 9:30am and explore from there.

It will help cement the previous talk on Sacred Land and Earth Energies, however if you can't make the talk, do please come along as we will cover all the elements as we explore.



Thursday 8th of November - Annual General Meeting and Archaeological Special Interest Group Annual Report with the Committee and Barry Goldring

Your chance to have your say and to vote on the issues facing the group and the people running it.

Report back from Barry Goldring on the activities and findings from all our field trips this year and what we hope to follow up with in the coming year.

Saturday 24th November - NO MEETING

Thursday 13th December - Christmas Lunch at Fromebridge Mill.

All are welcome at this year's Christmas Meal, being held again at Fromebridge Mill from 12.30pm. Please contact Barbara Davis if you are interested in joining us. Barbara will be taking bookings from October onwards.

**Unless otherwise stated, Meetings at Kingshill House Dursley on the
2nd Thursday 1.45 for 2.30pm and 4th Saturday 9.45 for 10.30am**

News

The Committee gives a vote of thanks to Trish Mills for her work on the newsletter over many years. We hope you like the new simplified format which means we are not limited to make of computer or operating system in order to create it.

We have had requests to reinstate the 'pub lunch' following the Saturday meetings. The Pub nearly opposite Kingshill Lane has reopened as the Ranchers Steakhouse. As it is so close, we are going to give it a try. Starters start at £4.95 and mains at £9.95.

We will be organising a meeting to improve our dowsing skills in January. We are planning to cover protection, finding lost objects, dowsing in time and more. Please let us know if there are any specific items you would like us to focus on. Tuition is available before any meeting during the 30 minutes before it starts.

We would like to thank Jacki Storey who has stepped up into that other conversation point - our "refreshments officer". Thank you.

A Helping Hand Still Required

We are looking for a deputy Librarian to assist Jane Willoughby. Jane is unable to attend meetings on a Saturday due to other commitments.

We have Special Interest Groups for Archaeological, Health and Water dowsing. Barry Goldring continues to run the Archaeological Group, but we need leaders for the Health and Water. Please contact Andrew, details as below.

Obituary – Mary Stevens

It is with sorrow that the death of Mary Stevens, one of our members is announced. Mary will be remembered by our more long-standing members as she regularly attended meetings at Slimbridge Village Hall along with Sue Breens. Because of declining health, she was not able to come often to Kingshill House. She will be remembered for her cheerful smile and willingness to help out at meetings. Our sympathy is extended to Tony, her husband and to Sue Breens, her sister.

Slimbridge Dowsing Group Committee

Chairman	Paul Syrett	01453 878553	paul.syrett@icloud.com
Co Vice Chairman	Andrew Pegg	07710 031477	andrew@businesspropertyadvantage.co.uk
Co Vice Chairman	Elaine Clements	01453 796360	elaine@castlefs.com
Sec, Membership, Treas.	Barbara Davis	01453 890679	barbaradavis4119@gmail.com
Field Events Co-ordinator	Barry Goldring	01453 861002	barryandmichele@waitrose.com
SIG Co-ordinator	Andrew Pegg	07710 031477	As Above
Librarian	Jane Willoughby	01453 872645	janewilloughby48@gmail.com
Social Media	Rob Gerrish	0117 9476865	rob.gerrish@blueyonder.co.uk