

## Spirit of Awen Festival – Thursday 3rd August – Keith's Farm at Arlingham – [spiritofawen.jimdo.com](http://spiritofawen.jimdo.com)

How does a day ticket for £15 to a local festival sound to you? Most festivals avoid selling day tickets these days, but the ***Spirit of Awen festival*** runs from 2nd to 6th August and will be held at Keith's farm in Arlingham – **West End Farm, Church Road, Arlingham, GL2 7JL**

I wrote to ask the organisers if they would like a free mention in our newsletter, and they said yes please, and will you do a talk or workshop on dowsing for us too!

So Barbara Davis and I are going to do our double act, a talk usually for the WI and local Groups, but we'll jazz it up a bit, and take along rods for folks to have a go.

Speakers usually get free entry, and we have been offered a **special deal for SDG Members only, on Thursday 3rd August only – a day ticket for £15.**

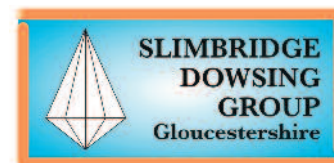
They will need names on the gate, so please let me know in advance if you intend to go. You pay on the gate, as usual, so I don't need your money, just your name. Please send to [quicksilver7@icloud.com](mailto:quicksilver7@icloud.com)

Other workshops and speakers include Professor Ronald Hutton, author and historian; Ffyona Campbell on the long-forgotten migration routes our Hunter-

Gatherer Ancestors used in order to find wild food in every season throughout Britain; Rune master Phil Woodward; practising Shamans Xanthe Watery Tiger & Julie Sanderson offering Shamanic group drumming and journeying workshops; Clare Brennan with her horses; June Waller offering sacred 'Honouring the Body' Workshops; Jamie Joel-Blackwater with something cosmic; Lady Oakwood Crafts – all things wooden; Trevor & Stephanie Hubbard on mead and wine; Steve Davis on the rhythms of the land, and the natural, ritual & seasonal wheel of the year.

**So come along and enjoy, and if you would like to come and help folks learn to dowse at our SDG workshop, please do.**

**Directions:** *Take the turning to Frampton on Severn off the A38; follow the Perry Way to Frampton, see village green on your left. Pass the Bell Inn, also on your left, cross the canal via the swing bridge, then take the left hand turn as you leave the bridge. Continue until you reach Arlingham. See Red Lion pub on your right, turn left opposite the pub into Church Road, follow past the church, camp will be signposted with turning on your left hand side.*



# Newsletter

## Slimbridge Dowsing Group

*Affiliated with the British Society of Dowsers*

Issue 34

April to June 2017

## Slimbridge Dowsing Group Meetings are moving to new premises.

**With effect from**

**Saturday 25th March 2017**

**all future meetings will be held at**

**Kingshill House, Kingshill Lane, Dursley, GL11 4BZ**

**Take a look – [www.kingshillhouse.org.uk](http://www.kingshillhouse.org.uk)**

**Meetings until Thursday 9th March 2017  
will be at Slimbridge Village Hall as usual**

**Our format for Meetings –**

**Second Thursday afternoon of the month at 1.45 for 2.30pm  
and**

**Fourth Saturday morning of the month at 9.45 am for 10.30 am  
will remain the same. (Unless we're out on a field trip!)**

***Don't forget you can see reports of most of our talks on our website.  
Both Rabbit books are almost sold out - I just have two of each left.***

### Slimbridge Dowsing Group 'New' Committee

|                           |                 |              |  |
|---------------------------|-----------------|--------------|--|
| President                 | Peter Golding   | 01453 890316 | <a href="mailto:mailto@petergolding.net">mailto@petergolding.net</a>                               |
| Chairman                  | Trish Mills     | 07513 437114 | <a href="mailto:quicksilver7@icloud.com">quicksilver7@icloud.com</a>                               |
| Vice-Chairman             | Steve Sanderson | 01453 890220 | <a href="mailto:sanderson702@btinternet.com">sanderson702@btinternet.com</a>                       |
| Secretary & Membership    | Barbara Davis   | 01453 890679 | <a href="mailto:barbara@davis679.fsnet.co.uk">barbara@davis679.fsnet.co.uk</a>                     |
| Treasurer                 | Barbara Davis   | 01453 890679 | <a href="mailto:barbara@davis679.fsnet.co.uk">barbara@davis679.fsnet.co.uk</a>                     |
| Publicity/Newsletter      | Trish Mills     | 01453 545855 | <a href="mailto:quicksilver7@icloud.com">quicksilver7@icloud.com</a>                               |
| Refreshments              | Ann Jones       | 01453 890244 | <a href="mailto:ann.croft327@btinternet.com">ann.croft327@btinternet.com</a>                       |
| Field Events Co-ordinator | Barry Goldring  | 01453 861002 | <a href="mailto:barryandmichele@waitrose.com">barryandmichele@waitrose.com</a>                     |
| Committee Member          | Elaine Clements | 01453 548454 | <a href="mailto:elaine@castlefs.com">elaine@castlefs.com</a>                                       |
| Committee Member          | Andrew Pegg     | 07710 031477 | <a href="mailto:andrew@businesspropertyadvantage.co.uk">andrew@businesspropertyadvantage.co.uk</a> |

Slimbridge Dowsing Group on the internet: [www.slimbridedowsers.org.uk](http://www.slimbridedowsers.org.uk)



**We are taking the Dowsing Group out of Slimbridge,  
but we will never take Slimbridge out of the Dowsing Group.  
Our name will always remain the same.**

**Membership and Entrance fees will remain the same  
throughout 2017. £3.00 for Members – £4.00 for Guests  
Plus 50p donation for tea or coffee and biscuits please.**

***Kingshill House is easy to find.  
Directions overleaf***

***PLENTY OF PARKING!***

## If you have a SatNav – GL11 4BZ



*Travelling **SOUTHBOUND** from the M5, exit J13 to A38. At the Slimbridge roundabout, take the A4135 signposted Dursley. Continue on A4135 to Kingshill, with pub and rank of shops on right, pass Lidl and turn **LEFT** into Kingshill Lane, signposted Upper Cam and Coaley. Then **FIRST LEFT** to Kingshill House, also signposted. (Opposite the rear entrance to the fire station.)*

*Travelling **NORTHBOUND** from the M5, exit J14 to A38. Continue northbound on A38, through traffic lights over railway bridge (30 mph), then turn immediately right onto the B4066 at the Prince of Wales Hotel. Continue following signs for Dursley to mini roundabout, turn **RIGHT** onto A4135. Continue to Kingshill, with pub and rank of shops on right, pass Lidl and turn **LEFT** into Kingshill Lane, signposted Upper Cam and Coaley. Then **FIRST LEFT** to Kingshill House, also signposted. (Opposite the rear entrance to the fire station.)*



*Travelling from Dursley come through the town, pass Sainsbury's and the swimming pool on your right; at mini roundabout turn **RIGHT** signposted Gloucester, A4135 and (M5). Continue up hill, pass speed camera (30 mph). Just before Lidl (on left), and after fire station (on right), turn **FIRST RIGHT** into Kingshill Lane, then **FIRST LEFT** to Kingshill House, which is signposted. (Opposite the rear entrance to the fire station.)*

## What will this move mean for you?

This Newsletter is to be circulated on Thursday 9th March, at our final meeting in Slimbridge Village Hall. **From Saturday 25th March, our meetings will be held at Kingshill House, Dursley.**

One of the many nice things about Kingshill House is its versatility. They have several rooms available, and although at the time of writing, we will usually be in the **Bar room** on the ground floor, when we have a **Workshop**, we will be able to use the **Art room** upstairs, which has tables and chairs more suited to a Workshop dynamic.

With the **Chi Gong event on Saturday 24th June**, (a bit like yoga or martial arts), we will be using the **Eyre room** downstairs, which has oodles of space for swinging your arms, or a cat, as necessary.

An added bonus is that there is a **well-equipped kitchen** and, bliss oh joy, a dishwasher too. So Ann Jones, our indispensable Tea Lady, will be able to join us at meetings as they begin, instead of after washing up and spring cleaning the kitchen.

Speaking of which, **tea, coffee and biscuits will continue to be available, but we would ask for a 50p donation if you partake.**

This is because the room hire costs

£30 per session, as opposed to £20 at Slimbridge, and although our increased numbers will adequately cover that, just 20 donations of 50p will cover it too. **Entrance fees will remain the same**, if for no better reason than we cannot increase them without asking you to vote in any increase at the AGM.

Finally, our **popular Saturday post-meeting lunches will continue, but in future we will be at the Old Spot, May Lane, 2 Hill Rd, Dursley GL11 4JQ.** They have a small private room that will seat about 15 people, so that is booked for our future use. It's easy to find – turn right out of Kingshill House, then immediately left out of Kingshill Lane; continue down to Dursley and at the mini-roundabout, turn right. Pass the hideous modern library, then the bus station, follow the road round to the right, and the **Old Spot** is on your right. There is a car park opposite, on your left.

If that car park is full, retrace your steps and go straight across the mini-roundabout to the swimming pool and Sainsbury's car parks. We can stay there for three hours, so you can have a swim and do the weekly shop afterwards as well. **Good food and great conversation.** See you there!



We are proud to have our very own **Jim Greatrix Library**, in memory of Jim who generously donated the funds for us to buy our lovely oak cupboard and to get started with some wonderful books. You can browse the list on our website – [slimbridgedowsers.org.uk/HTML/library.shtml](http://slimbridgedowsers.org.uk/HTML/library.shtml)

Some of those books include two by our founder and now President, Peter Golding who, despite mobility problems, continues his work as a water diviner. (Volunteers to assist welcome).

*Experiences of an Old Dowsing* tells us how he discovered dowsing, plus several Appendices with useful detail as to how to do it yourself (£10).

Peter's *Dowsing For Water* takes you from being a complete beginner to being able to oversee drilling on site, with great diagrams by Helen Gee and photos for every stage of the process (£30).

Our two famous Rabbit books – *This Rabbit is Constipated* and *It's Around Here Somewhere*, containing reports of our meetings over the last 10 years, have now almost sold out, with just two of each left. All proceeds from these two books went to SDG.

It has been my privilege to publish books for several renowned authors,

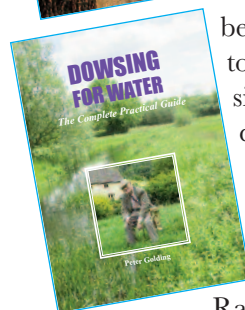
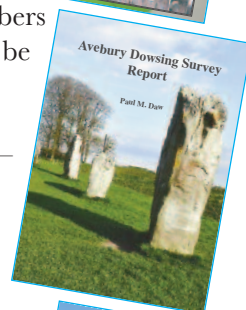
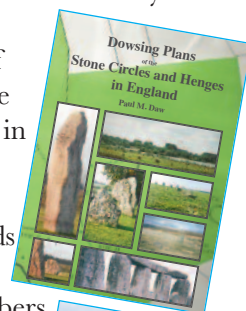
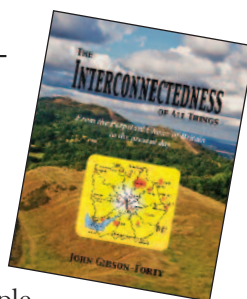
and the one that has been the most life-changing, for me and for those who have read it, is *The Interconnectedness of All Things* by John Gibson-Forty (£20). It has brought about an acceptance that sound can heal, not just the sick, but the land, trees, leys, etc., and has inspired many people and offshoots.

More recently, three books by Paul Daw report on his dowsing surveys of almost all the stone circles and henges in England.

The author has kindly said proceeds from any books sold to SDG members (£15 each) should be donated to SDG funds.

All these books – and many more – are available for loan from our library, free of charge, or you can order direct from the authors, or via me, see contact details on back page. (Or Amazon as a last resort!)

Trish Mills



## Slimbridge Dowsing Group Programme April – June 2017

**Thursday 13th April – Easter  
NO MEETING**

**Wot? No  
meeting?**



**Saturday 22nd April**

**Dowsing Our New Home!**

with Barbara Davis and Barry Goldring  
*Yes, let's get to know what there is to dowsing at Kingshill House – ley lines, history, entities? Aled by Barbara and Barry, he says,*

*"Some preliminary map dowsing showed a few*

*Neolithic and Bronze Age buildings on this site, and a larger Iron*

*Age settlement too. There may even be a few Roman buildings. If you fancy something more ephemeral, there are bound to be earth energies, and a few entities (hopefully all beneficial) in and around a building of this age. During a preliminary visit, Trish found a ley coming through the front door and stopping in the middle of the hall. There are bound to be more delights on site – we just have to find them."* Come along and see what you can find; debriefing afterwards to see who found what.

**Pub lunch and chat at the Old Spot after every Saturday meeting.**

**Thursday 11th May Prestbury Ghost Walk – 2 p.m. in Prestbury  
£8 to Elizabeth Poraj-Wilcznska (maximum 20)**

*We will meet outside the front door of St Mary's church in the heart of Prestbury, reputedly one of the most haunted villages in England with at least twenty ghostly tales to its name.*

*Why is Prestbury so haunted? We will be dowsing for earth energies and water, and looking for clues in the architecture and natural phenomena. We will be using our senses to discover hot spots where apparitions may be likely to occur. The tour will include local history, folklore, mystery and magic. We will conclude with a visit to a local pub to discuss our findings and relax amongst the spirits!*

**We are limited to 20 on this walk. Some folks will travel direct, but ALL names in advance please to Steve Sanderson – details back page.**

**Ride sharing:** *Several members have kindly offered to ride share, so we will meet at Kingshill House at 12.30 p.m. where you can leave your own car in their car park. There is free parking in a small car park clearly signposted from the main street in Prestbury first left past the Kings Arms pub as you drive in from Cheltenham (Idsall Drive). There is also free parking in Mill Street and a small pay and display car park at the back of the Kings Head car park. Don't forget to let Steve know you're coming!*



## Slimbridge Dowsing Group Programme

### April – May 2017

**Saturday 27th May – Bank Holiday**  
**NO MEETING**

Not again!  
That's twice  
in one  
Newsletter!



Dr Patrick MacManaway

Thursday 15th June  
**Dragons, Elementals and Nature  
Spirits – How Love and Communi-  
cation can bring Fertility and  
Abundance to the Living Landscape**  
with Dr Patrick MacManaway

*For over 6,500 years, sustainable agriculture has been supported, interwoven and based upon the careful management of the subtle energies of the landscape, dialogue with Devas, and communication with the many and varied Spirits of Place.*

*The shift in the agricultural paradigm (meaning example, pattern, practice) over the last 100 years, from the practice of 'husbandry' to that of 'agricultural science', has broken the traditional cycle of biology, relationship and spiritual connection that supported and sustained us for so long.*

*The subsequent and accelerating devastation of these practices has destroyed top soil, destroyed soil biology, destroyed the capacity for soil to absorb and retain moisture, destroyed the capacity for farmland to support wildlife, and produces food that is indigestible due to genetic modification, depleted in minerals, nutrients and life force, with the consequent degradation of human health.*

*The emerging field of Quantum-based Agriculture looks to restore the fundamental principles that have kept agriculture sustainable since early times, and gives us once again a bright future for farm and food.*

**Dr. Patrick MacManaway** is a third generation practitioner of dowsing, psychic and healing arts, holds a degree in Medicine and is a Past-President of the British Society of Dowisers.

*In this talk he will present case studies with insights and observations arising from working with farmers on farms in the UK, USA and Australia.*

*Meetings take place in Kingshill House, Dursley on the second  
Thursday 1.45 for 2.30pm and fourth Saturday 9.45 for 10.30 am*

**Saturday 24th June Qi Gong** with Donna and Liam

*I first thought Qi Gong (sometimes spelled Chi Gong) would appeal to our members when Rob Gerrish told me he had joined a class at Lotus Nei Gong Bristol, and found it helped his concentration, perception and dowsing skills.*

*You don't have to be mega-fit to enjoy it, although you might end up fitter than when you began!*

*Donna and Liam have both completed a three-year teacher training certificate with the Lotus Nei Gong School of Daoist Arts, with whom they have been training for eight years. Both have practised martial arts and meditation for many years and enjoy passing on the Daoist Arts to others.*

*As Liam explains, "Qi Gong can be translated as meaning 'energy work'. It involves working with the body's energy system through gentle exercises. It is*



*beneficial for body, mind and spirit. The exercises help develop balance in the energy system,*

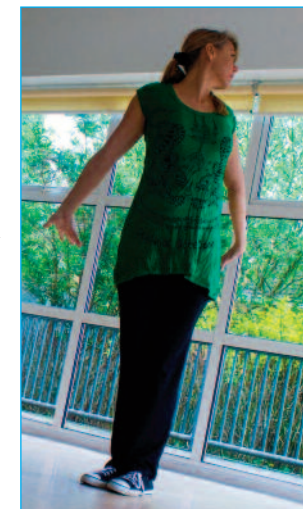
*also known in acupuncture as the meridian system. Different sets of Qi Gong exercises offer tonifying, purging and regulating functions.*

*It not only brings health but maintains health. When practising Qi Gong, you learn to combine various body movements with your breathing and your intent to create a healthy flow of internal energy (Qi) throughout.*

*The Daoist arts are about development and change. Through training and self-cultivation, you hope to condition your body, energy system and mind to seek good health, harmony and ultimately self realisation. Qi Gong does not look much from the outside but the effects are powerful on the inside."*

*[www.lotusneigongbristol.co.uk](http://www.lotusneigongbristol.co.uk)*

**Please note, for this event only, we will be using the Eyre Room at Kingshill House, far back left as you enter the hall.**



**Pub lunch and chat at the Old Spot after every Saturday meeting.  
See page 3 for directions and parking information.**